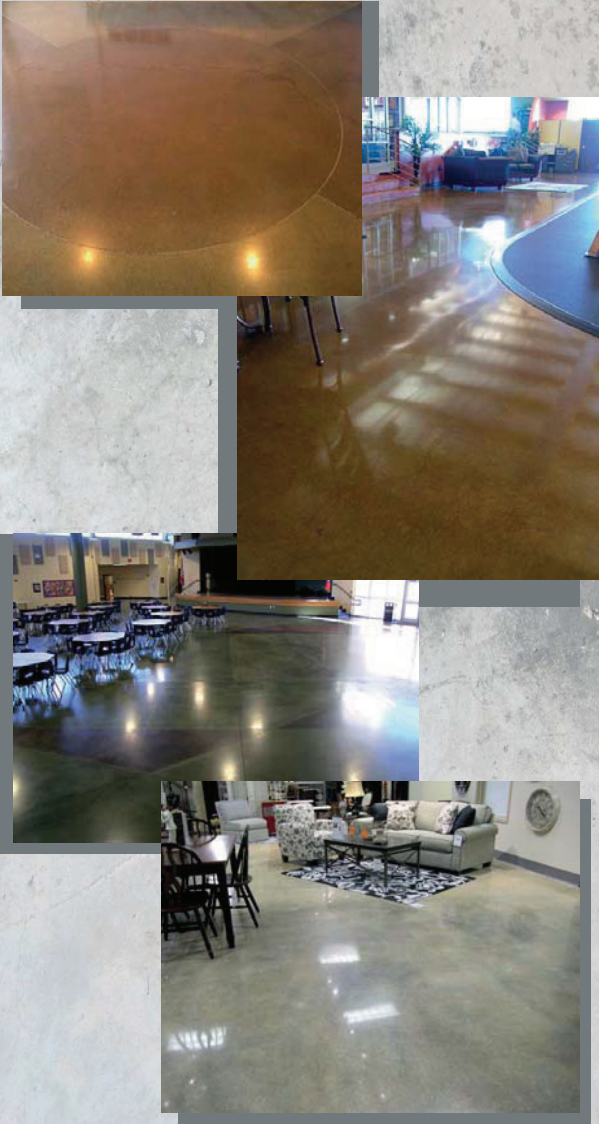


- **Increases Ambient Lighting**

Greater visibility and less overhead lighting required, creating a bright, clean, and professional atmosphere.

- **Environmentally Friendly**

Polished concrete does not require any topical finish. Because Diamond grinding is a natural, green process, LEED credits can be given.



3100 Gravois Avenue
St. Louis, MO 63118

Advanced Environmental Services, Inc.
AES



Polished Concrete Color System

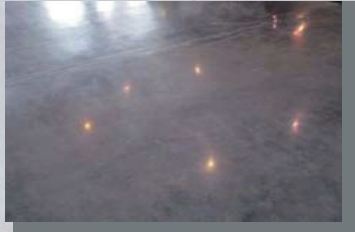


3100 Gravois Avenue
St. Louis, MO 63118
Office: 314.865.2662
Fax: 314.652.3542
www.aes-stl.com

Have Faith in Advanced Environmental Services

Advanced Environmental Services

Offers polished concrete utilizing heavy-duty polishing machines equipped with diamond tools that gradually grind down the concrete. The grinding removes minor pits, blemishes, stains or coatings, and continues until the desired degree of shine and smoothness are achieved. The concrete can also be etched and tinted to any color you choose, and will give you decades of beauty and maintenance-free use.



Polished concrete can be used in every type of facility or home that has an existing concrete surface. Often seen in:

- Office buildings
- Restaurants
- Hotels
- Grocery/Home Improvement Stores
- Showrooms
- Airplane Hangars
- Salons
- Schools
- Hospitals
- Residential foyers or basements
- Warehouses
- Other public facilities
- Churches



Benefits of Polished Concrete

• Lower Lifetime Cost

Polished concrete resists scuffs and tire marks and has a longer lifespan in high traffic areas than other flooring. It is easy to clean—only occasional damp mopping—requiring less maintenance cost. This eliminates the need for messy waxes, coatings, or stripping sealers, which in turn will cut annual maintenance cost up to 60%—as well as the associated labor, time, and expense to apply them. The dense surface also inhibits stains from oils or liquids.

• Aesthetics

By smoothing and exposing the aggregate in the concrete, polishing provides a design that has an organic or natural stone appeal that appears expensive and elegant.

Polishing removes minor pits, blemishes, stains, and coatings from the floor, giving it a smooth feel. It reveals the unique look of the concrete by exposing imperfections such as veins, cracks, or coarser aggregate.

